

SWITCHES

STANDARD FAMILY CODE N0001250P2A01

Type	N 1250
Number of Poles	2 NO
Connection between poles	Series ¹
Mounting Position	Vertical
Control Voltage Rating Uc [Vdc]	110Vdc/Vac - 220Vdc/Vac ¹
Auxiliary Contact Blocks	5 NO + 5 NC
Block Type	B
Arc chute Material	Ceramic in plastic shells
Main Contacts tips Material	S6
Arcing Contacts tips Material	-
Electric Diagram	TU0165/B (DC) - TU0165/C (AC)
Layout Drawing	D53369

¹ Series bar connections available under request

² To be specified in order phase.



MICROELETTRICA

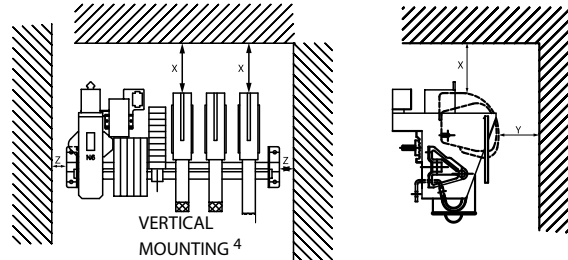
Description

Contactors with single interruption in air, electromagnetic control by power save system (economy resistor).
 Typical application DC Motor control. Reference Standard IEC 60947-4-1.

Electrical Characteristics					
Rated Operational Voltage Ue [Vdc]	220	440	660	750	1000
Rated Insulation Voltage Ui [Vdc]	1000				
Conventional Free air thermal current Ith [at 40°C] ³	1250				
Conventional Free air thermal current Ith [at 60°C] ³	1100				
Maximum Making Capacity for 100 ms Ich [kA]	20				
Short Circuit Withstand Current for 100 ms Icw [kA]	25				
Average impedance per pole at 50 Hz [MicroOhm]	300				
Blow out circuit type	Direct				
Electrical Characteristics 2NO poles series connected (S6) for DC application					
Rated Operational Voltage [Vdc]	220	440	660	750	1000
Maximum Breaking Capacity tau=15ms Idcmax [A]	16000	12000	10000	8800	6600
Utilization Category according to IEC60947-4-1: DC3					
Rated Operational Power Pe [kW]	275	550	825	937,5	1100
Rated Operational Current Ie [A]	1250	1250	1250	1250	1100
Utilization Category according to IEC60947-4-1: DC5					
Rated Operational Power Pe [kW]	275	550	750	750	0
Rated Operational Current Ie [A]	1250	1250	1136	1000	0

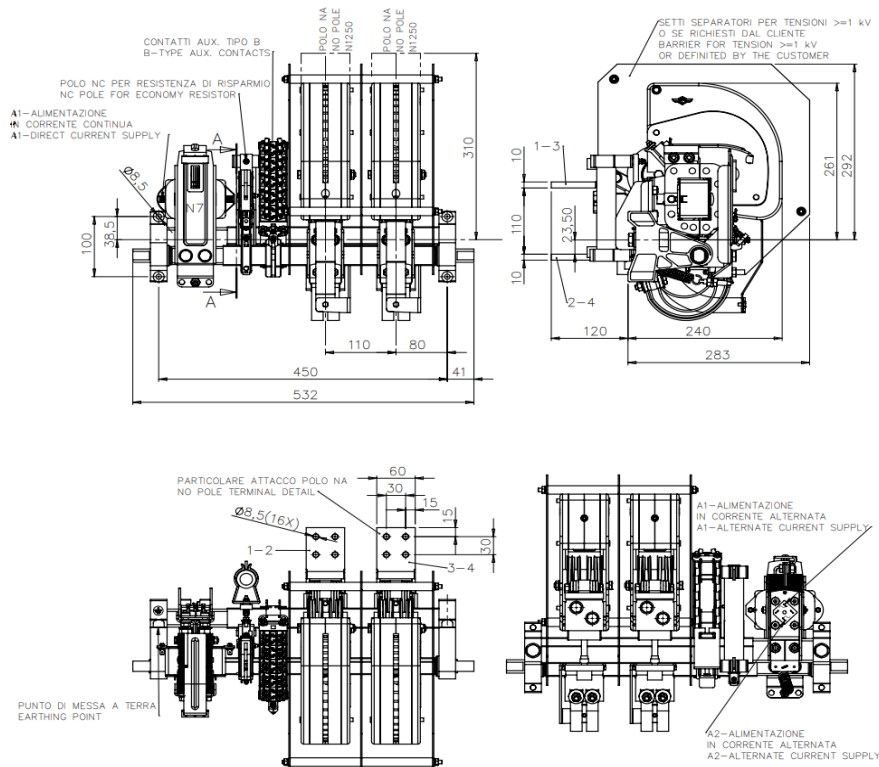
³ Device cabled according IEC 60947 ⁴ Other mounting positions not allowed

Minimum clearances [mm] from:				
Rated Insulation Voltage	X	Y	Z	
	Metal Parts	100	50	30
1000	Plastic Parts	50	30	20



Mechanical Characteristics	
Mechanical Endurance (cycles) ⁵	1x10 ⁶
Weight [kg]	38
Control Circuit	
Control Voltage Range	0.85U _c ÷ 1.1U _c
Power Consumption (U _c and T = 20°C) at Closing - at Opening [W]	1000-50
Mechanical Operation Time (U _c and T = 20°C) when Closing - Opening [ms]	110-15
Mechanical Operation Time (in the worst condition) when Closing - Opening [ms]	400-20
Time Constant (L/R) at Pick Up - when Holding [ms]	
Electrical Connections	Fast-On 6.35x0.8mm
Auxiliary Contacts	
Tips material	Solid Silver
Rated Operational Voltage [V _{ac} / V _{dc}]	250
Rated Current [A]	10
Minimum Switching Current at 16V _{dc} [mA] ⁶	100
Electrical Connections	Fast-On 6.35x0.8mm
Environmental Conditions	
Stock Temperature Range	-25°C ÷ +60°C
Operational Temperature Range	-5°C ÷ +55°C
Max Altitude without Performance Derating [m]	2000

⁵With respect of the maintenance operations ⁶ In clean and dry conditions



The technical specifications reported are not binding and they should be agreed in the contract.

For further technical information on our products visit www.microelettrica.com

Microelettrica Scientifica S.p.A.

20090 Buccinasco (MI) , Via Lucania 2, Italy

Tel.: +39 02 575731

E-mail: info@microelettrica.com

www.microelettrica.com



KNORR-BREMSE

NEW YORK AIR BRAKE

IFE

MERAK

MICROELETTRICA

SELECTRON

KIEPE ELECTRIC

EVAC

ZELISKO

RAILSERVICES