

# SWITCHES

## STANDARD FAMILY CODE N000350P2A01

Type	N 350
Number of Poles	2 NO
Connection between poles	Series <sup>1</sup>
Mounting Position	Vertical
Control Voltage Rating Uc [Vdc]	110Vdc/Vac - 220Vdc/Vac <sup>1</sup>
Auxiliary Contact Blocks	5 NO + 5 NC
Block Type	B
Arc chute Material	Ceramic in plastic shells
Main Contacts tips Material	S6
Arcing Contacts tips Material	-
Electric Diagram	TU0165/B (DC) - TU0165/C (AC)
Layout Drawing	D53394

<sup>1</sup> Series bar connections available under request

<sup>2</sup> To be specified in order phase.



**MICROELETTRICA**

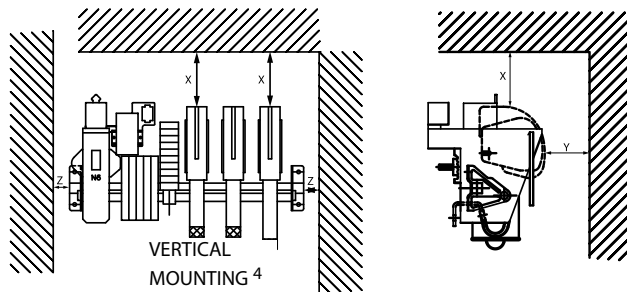
**Description**

Contactors with single interruption in air, electromagnetic control by power save system (economy resistor). Typical application DC Motor control. Reference Standard IEC 60947-4-1.

Electrical Characteristics					
Rated Operational Voltage Ue [Vdc]	220	440	660	750	1000
Rated Insulation Voltage Ui [Vdc]	1000				
Conventional Free air thermal current Ith [ at 40°C ] <sup>2</sup>	350				
Conventional Free air thermal current Ith [ at 60°C ] <sup>2</sup>	300				
Maximum Making Capacity for 100 ms Ich [kA]	6				
Short Circuit Withstand Current for 100 ms Icw [kA]	8				
Average impedance per pole at 50 Hz [MicroOhm]	400				
Blow out circuit type	Direct				
Electrical Characteristics 2NO poles series connected (S6) for DC application					
Rated Operational Voltage [Vdc]	220	440	660	750	1000
Maximum Breaking Capacity tau=15ms Idcmax [A]	5000	3500	3000	2640	1980
Utilization Category according to IEC60947-4-1: DC3					
Rated Operational Power Pe [kW]	77	154	231	262,5	320
Rated Operational Current Ie [A]	350	350	350	350	320
Utilization Category according to IEC60947-4-1: DC5					
Rated Operational Power Pe [kW]	77	154	203	203	0
Rated Operational Current Ie [A]	350	350	307	270	0

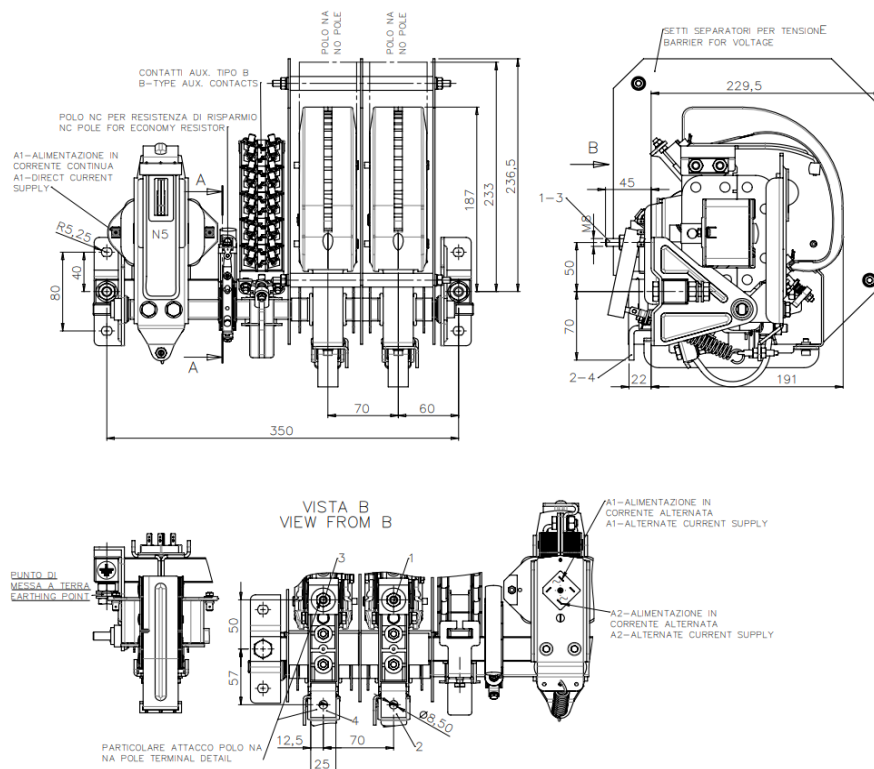
<sup>2</sup> Device cabled according IEC 60947 <sup>3</sup> Other mounting positions not allowed

Minimum clearances [mm] from:				
Rated Insulation Voltage	X	Y	Z	
1000	Metal Parts	100	50	30
	Plastic Parts	50	30	20



Mechanical Characteristics	
Mechanical Endurance (cycles) <sup>5</sup>	1x10 <sup>6</sup>
Weight [kg]	16
Control Circuit	
Control Voltage Range	0.85U <sub>c</sub> ÷ 1.1U <sub>c</sub>
Power Consumption (U <sub>c</sub> and T = 20°C) at Closing - at Opening [W]	180-15
Mechanical Operation Time (U <sub>c</sub> and T = 20°C) when Closing - Opening [ms]	60-20
Mechanical Operation Time (in the worst condition) when Closing - Opening [ms]	250-25
Time Constant (L/R) at Pick Up - when Holding [ms]	
Electrical Connections	Fast-On 6.35x0.8mm
Auxiliary Contacts	
Tips material	Solid Silver
Rated Operational Voltage [V <sub>ac</sub> / V <sub>dc</sub> ]	250
Rated Current [A]	10
Minimum Switching Current at 16V <sub>dc</sub> [mA] <sup>5</sup>	100
Electrical Connections	Fast-On 6.35x0.8mm
Environmental Conditions	
Stock Temperature Range	-25°C ÷ +60°C
Operational Temperature Range	-5°C ÷ +55°C
Max Altitude without Performance Derating [m]	2000

<sup>5</sup>With respect of the maintenance operations    <sup>6</sup> In clean and dry conditions



The technical specifications reported are not binding and they should be agreed in the contract.

For further technical information on our products visit [www.microelettrica.com](http://www.microelettrica.com)

**Microelettrica Scientifica S.p.A.**

20090 Buccinasco (MI) , Via Lucania 2, Italy

Tel.: +39 02 575731

E-mail: [info@microelettrica.com](mailto:info@microelettrica.com)

[www.microelettrica.com](http://www.microelettrica.com)

