

SWITCHES

STANDARD FAMILY CODE LTKE0901MX000

| Type | LTKE900 |
|---|------------------------------------|
| Number of Poles | 1 NO |
| Mounting Position | Horizontal - Vertical ¹ |
| Control Voltage Rating [V ^{dc}] | 24-110 ¹ |
| Auxiliary Contact Blocks | 3 (1NO+1NC) + 1CO |
| Block Type | Integrated |
| Main Contacts tips Material | Cu |
| Layout Drawing | D54143 |
| Electric Diagram | SC27631 |

¹ To be specified in order phase.



MICROELETTRICA

Description

One pole normally opened and closed disconnect switch, electric motor control by electronic device, 2 positions, bi-stable. Reference standard IEC 60077-2.

Electrical Characteristics

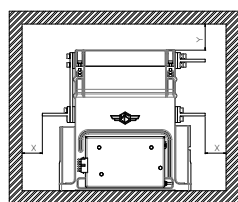
| | |
|--|---------|
| Rated Operational Voltage [V_{ac} / V_{dc}] | 3600 |
| Max Operational Voltage [V_{ac} / V_{dc}] | 4200 |
| Conventional Free Air Thermal Current [A] at 40°C ² | 1050 |
| Conventional Free Air Thermal Current [A] at 75°C ² | 900 |
| Main circuit resistance [$\mu\Omega$] ³ | <80 |
| DC-Rated Operational Current ($\tau=15ms$) [A] | 0 |
| DC-Maximum Breaking Capacity ($\tau=5ms$) [A] | 0.2 |
| AC-Maximum Breaking Capacity ($\cos\phi=0,8$) [A] | 0.5 |
| Short Circuit Withstand Capacity for 100ms [kA] | 50 |
| Fault Making Capacity @ 100V ($\tau=0ms$) [A] | 50 |
| Component Category / Operational Frequency Class | A4 / C3 |

Insulation Characteristics

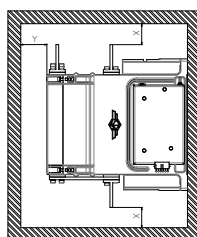
| | |
|---|-------|
| Rated Insulation Voltage @ OV4/PD3A [V] | 3700 |
| Rated Insulation Voltage @ OV3/PD3 [V] | 4800 |
| Rated impulse voltage [kV] | 30 |
| Rated Power Frequency Withstand Voltage (50Hz; 60") | |
| Between HV circuit and LV circuit+Earth [V] | 11600 |
| Between open contacts [V] | 9200 |
| Between each pole (if more than 1) [V] | 11600 |
| Between LV circuit and Earth [V] | 1500 |
| Minimum clearance distance between open contacts [mm] | 80 |
| Minimum clearance distance between HV circuit and LV circuit+earth [mm] | 40 |
| Minimum creepage distance [mm] | 80 |
| Comparative Tracking Index (CTI) (IEC 60112) [V] | 600 |

² Device cabled according IEC 60947 ³ In new and clean condition for power loss calculation only

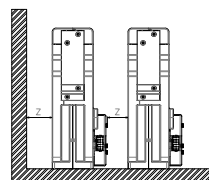
⁴ Other mounting positions not allowed



HORIZONTAL
MOUNTING ⁴



VERTICAL
MOUNTING ⁴



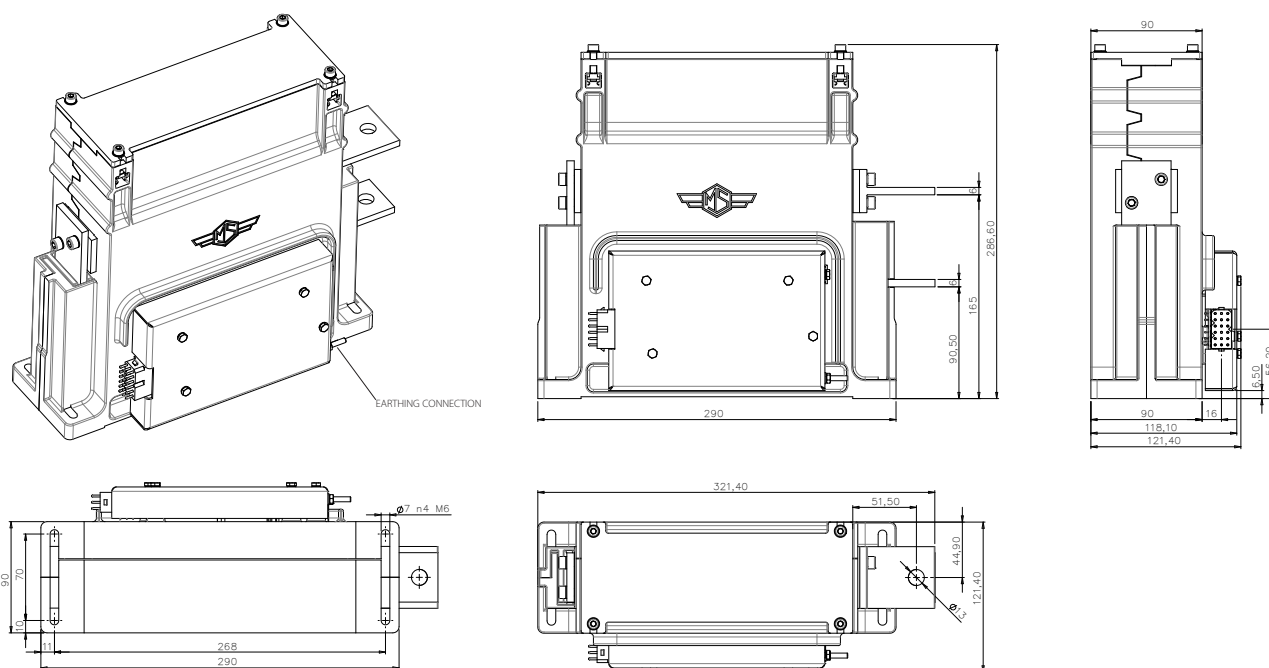
Minimum clearances [mm] from:

| Rated Operational Voltage | | X | Y | Z |
|---------------------------|---------------|----|----|----|
| 3600V | Metal Parts | 50 | 50 | 30 |
| | Plastic Parts | 30 | 30 | 30 |

| Mechanical Characteristics | |
|--|--|
| Mechanical Endurance (cycles) | 2.5x10 ⁵ |
| Shock and Vibrations (IEC61373) | Cat. 1 - Class B |
| Weight [kg] | 11 |
| Control Circuit | |
| Control Voltage Range | 0.7U _c ÷ 1.25U _c |
| Power Consumption (U _c and T = 20°C) at Pick up - when operating - at Holding [W] | 100 - 30 - 0 |
| Mechanical Operation Time (U _c and T = 20°C) when Closing - Opening [ms] | 3000 - 3000 |
| Mechanical Operation Time (in the worst condition) [ms] | 4000 - 4000 |
| Electrical Connections | Low voltage connector SMS 18GE63 |
| Auxiliary Contacts | |
| Tips material | Silver Alloy |
| Rated Operational voltage [V _{ac} / V _{dc}] | 250 |
| Rated Current [A] | 5 |
| Environmental Conditions | |
| Stock Temperature Range | -50°C ÷ +85°C |
| Operational Temperature Range up to 1000m | Tx (-40°C ÷ +75°C) ⁵ |
| Operational Temperature Range up to 2000m | T2 (-40°C ÷ +65°C) ⁵ |
| Humidity | 10 ÷ 95% RH ⁶ |

⁵ According to IEC50125-1

⁶ According to IEC 62498-1



The technical specifications reported are not binding and they should be agreed in the contract.

For further technical information on our products visit www.microelettrica.com

Microelettrica Scientifica S.p.A.

20090 Buccinasco (MI) , Via Lucania 2, Italy

Tel.: +39 02 575731

E-mail: info@microelettrica.com

www.microelettrica.com



 **KNORR-BREMSE**

 **NEW YORK AIR BRAKE**

 **IFE**

 **MERAK**

 **MICROELETTRICA**

 **SELECTRON**

 **KIEPE ELECTRIC**

 **EVAC**

 **ZELISKO**

 **RAILSERVICES**