

SWITCHES

STANDARD FAMILY CODE LTHM08012XA00

Type	LTHMD 800
Number of Poles	2 NO
Mounting Position	Horizontal - Vertical ¹
Control Voltage Rating [V ^{dc}]	24 - 36 - 72 - 110 ¹
Auxiliary Contact Blocks	4 (1 NO + 1 NC)
Feedback Signal Scope	AUX C (a0, b0) AUX D (a1, b1)
Block Type	PBX
Contact Material	Cu
Electric Diagram	SC27695
Layout Drawing	D53818

¹ To be specified in order phase.



MICROELETTRICA

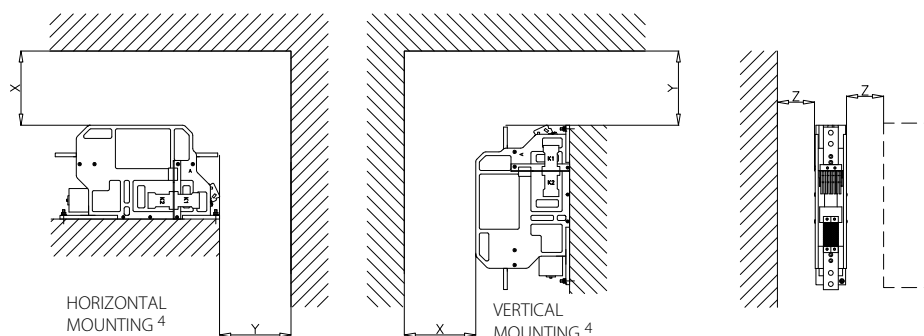
Description

Disconnecter switch, electric motor control with 2 auxiliary relay, 2 positions, bi-stable.
Reference standard IEC 60077-2(2017), IEC 61992 and IEC 60947.

Electrical Characteristics	
Rated Operational Voltage [V_{ac} / V_{dc}]	3600
Max Operational Voltage [V_{ac} / V_{dc}]	4000
Conventional Free Air Thermal Current [A] at 40°C ²	800
Conventional Free Air Thermal Current [A] at 75°C ²	720
Main circuit resistance [$\mu\Omega$] ³	200
DC-Rated Operational Current ($\tau=15ms$) [A]	0
DC-Maximum Breaking Capacity ($\tau=5ms$) [A]	0.2
AC-Maximum Breaking Capacity ($\cos\phi=0,8$) [A]	0.5
Short Circuit Withstand Capacity for 5ms [kA]	90
Component Category / Operational Frequency Class	A4 / C3
Insulation Characteristics	
Rated Insulation Voltage [V]	4000
Pollution Degree - Overvoltage Category (EN 50124-1)	PD3/OV3
Rated impulse voltage [kV]	30
Rated Power Frequency Withstand Voltage (50Hz; 60")	
Between HV to LV circuit + Earth [V]	10000
Between open contacts [V]	7900
Between each pole (if more than 1) [V]	10000
Between LV circuit to Earth [V]	1500
Minimum clearance distance Between open contacts [mm]	32
Minimum clarence distance between power circuit to earth [mm]	40
Minimum creepage distance	50
Comparative Tracking Index (CTI) (IEC 60112) [V]	600

² Device cabled according IEC 60947 ³ In new and clean condition for power loss calculation only

⁴ Other mounting positions not allowed, reduced distances should be approved by Microelettrica.



Minimum clearances [mm] from:				
Rated Operational Voltage		X	Y	Z
4000V	Metal Parts	50	50	30
	Plastic Parts	30	30	30

The technical specifications reported are not binding and they should be agreed in the contract.

